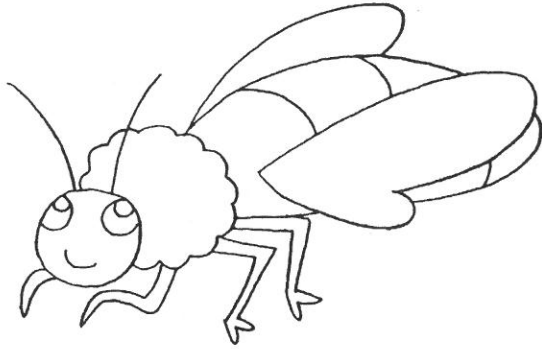


## LA PAROLA GIUSTA

☼ QUAL È LA PAROLA GIUSTA? COLORA LE LETTERINE.



P	A	E
---	---	---

A	P	E
---	---	---



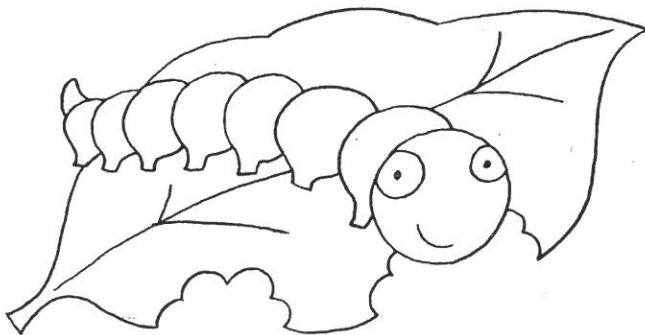
G	F	O	O
---	---	---	---

G	U	F	O
---	---	---	---



E	R	B	A
---	---	---	---

A	R	B	E
---	---	---	---



B	R	U	C	O
---	---	---	---	---

R	U	B	O	C
---	---	---	---	---

# CREPA

PRECA Copra Crepa CRUPA

---

# LEPRE

LAPRE Lepre LEPRE Larpo

---

# PONTE

MONTE Pinte Ponte PANTE

---

# DORPO

Derpo Dorpo DURPE DERTE

---

**Ricerca la sequenza di lettere uguale al modello.**

C A R

**Per facilitarti il compito, puoi colorare la prima lettera che vedi scritta.**

RAC CAR ACR CAR MAR DAR

CAR BAR CUR PAR CAR RAC

CAR DAR ACR RAC RAC CAR

CAR MAR CRA RAC CRA GAR

SAR COR CRA CAR TRA ACR

TAR QAR AAR RAC CCR CAR